

NEW

TOOLSHOP

WHAT'S NEW IN THIS CATALOGUE

Page
8
**Lightweight Start•All®
Jump Starter & Power Pack**

- Power ports for #JP-12-24:
(1) 4A 12VDC, (2) 5.5mm 4A 12VDC, (1) USB-C input/output, (4) 2.1A 5V USB
- 500 lumen LED flashlight with SOS and strobe emergency functions

Item #	Volts	Engine	Amps	Joules ^{ES}	Weight
GDL-JP-12-24	12/24V	Class 8 Gasoline/ Diesel up to 16L	10,000/ 5,000	166500	18.5 lbs

Page
17

AUT-BPC-100

**Fully Automatic Heavy Duty
12V Smart Charger**

- Charges individual 12V batteries and 12V battery packs (up to 8 batteries)
- Compatible with standard/flooded or AGM batteries
- Continuous duty high current charge:
70 Amps @ 115 VAC and 100 Amps @ 230 VAC
- 2 Modes: Fast Charge mode to 80% state of charge and Full Charge mode to 100% capacity state of charge
- Displays remaining charge time
- Audible alert when battery charge completed
- Group 31 battery connection options
- Compatible with the #ES-8 Mobile Cart

Page
20

BVA-360

BVA-360KP

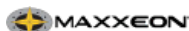
**6V/12V
Battery &
Electrical System
Tester**

- Load test cap.: 40A
- Battery types:
flooded lead acid, AGM, EFB
- Full system test: battery, starter, and alternator in approx. 60 seconds
- Digital pulse technology for true-load results
- Ease of use with on-board load, no need to repeatedly enter the vehicle to turn on accessories during testing
- Battery ratings: CCA, MCA, CA, En
- LCD touch screen
- Next step advice, hookup diagrams and illustrations
- Built in IR battery temperature measurement
- Wi-Fi communication for seamless integration to optional AMPNET cloud based data management tool
- Performs battery reset (with optional R3-D OBDII Dongle) on most BMW, MINI Coopers, and Ford vehicles

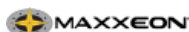
Item #	Description
AUT-BVA-360	Battery & Electrical System Tester
AUT-BVA-360KP	Battery & Electrical Syst. Tester with Printer & Charging Station

Page
27MXN-01024 **\$113⁷⁵**
**WorkStar® LumaStik® Rechargeable
Combo UV & White Beam
Magnetic Inspection Light**

- UV Light: 395nm, 630mW – 5 minutes (one cycle)
- Floodlight: 800/150 lumens, 2.5 hrs/8 hrs
- Spotlight: 150 lumens, 8 hrs
- Powerful integrated magnets
- LED charge indicators
- Includes type C USB charging cable
- Charge time: 4 hr
- Dimensions: 6.4" X 1.1" X 1.7"

Page
30
 MXN-00814 **\$61⁹⁵**
**Cyclops™ –
Rechargeable Magnetic
Area Light - BLUE**

- Lumens: 720/360/180
- Runtime: 2/4.5/10 hrs
- Includes USB C charge port and cord

Page
32
 MXN-04100 **\$233⁸⁵**
**SearchPoint® HORIZON
Rechargeable Magnetic
Spotlight/Floodlight**

- 4x Zoomable lens: spot beam to flood beam
- Lumens: 3,000/1,200/600
- Runtime: 2.5 hrs/5.5 hrs/12.5 hrs
- Strong magnetic base with 150 lb pull force
- 90° Rotating hook
- IK 07 shock and resistant and IP 65 water resistant
- Includes: carrying case, lanyard, USB-C cable
- Dimensions: 7.4" x 5.9" x 2.6"

Page
35
**Wedge® & Wedge®
XT Li-IonUSB-C
Rechargeable Flashlights**

- Water and impact resistant
- Includes USB-C cord and lanyard



Item #	Body	Style	Length	Lumens/Runtime	
STM-88812	●	Wedge® XT	4.25"	500 lumens, 2 hrs	\$157.55
STM-88813	●	Ultra-Compact		50 lumens, 11 hrs	\$157.55

Page
40
 MXN-00640 **\$78¹⁵**
**WorkStar® LightVisor™
Rechargeable Headlight**

- Lumens: 600/300 • Runtime: 6.5 hrs/3 hrs
- 130° beam angle • IP 65 water resistant; Shock resistant, up to 6 ft. (2m)
- Charge indicator: 25%, 50%, 75%, 100%
- Includes USB-C charge cable • Charge time: 4.5 hours

Page
47
 AUL-300100 **\$81⁹⁵**
**Pre-Programmed MX-Sensor BLE
Bluetooth TPMS Sensor for Tesla 3/Y/S/X Models**

- Tesla-ready pre-programmed Bluetooth Low Energy (BLE) TPMS sensor for Tesla 3/Y/S/X models: **just fit and go**
- Programmable with Autel TS900, ITS600 and ITS600PRO TPMS tools for the latest BLE-equipped vehicles
- Built to meet industry standards
- 15°-34° adjustable angle valve stem to meet various vehicle needs
- Battery life of 6-plus years
- Tested to endure extreme temperatures

Page
48
**1-Pc Replacement Press-In
Metal Valve Stems for
Autel MX-Sensor 1-Sensor**

Item #	Stem	
AUL-CV-001	Black	\$4.55
AUL-CV-002	Titan Grey	\$4.55
AUL-CV-003	Chrome	\$11.35



Page
63**CTA-1450 \$39⁴⁵**
6" Long Wire Install Tool Kit

- Use to place and extract cables, connectors and components
- Allows the user to push, pull and feed wires safely and accurately
- Reduce the chance of damage to wire insulation
- Not for high voltage or live wire use

Page
64**TRACERLINE® Marksman II**
ULTRASONIC DIAGNOSTIC TOOL**HBF-TP-9367L \$1003⁰⁵**
Ultrasonic Diagnostic Tool

- Converts & amplifies inaudible ultrasonic sounds into audible "natural" sounds
- **Applications:** Automotive, HD Trucks, A/C, Refrigeration
- Pinpoints quickly and effortlessly air brake leaks, gear and bearing wear in wheel hubs, transmissions, transfer cases, differentials, compressed air, vacuum, electric motors and other pressurized leaks
- 5-LED signal intensity indicator and audible alarm
- **Laser pointer** to help pinpoint the source of pressurized leaks
- Checks for electrical discharge associated with insulation breakdown, carbon tracking and arcing
- Unique ultrasonic emitter helps locate faulty seals, gaskets and weather stripping in passenger cabs, trailers and other non-pressurized enclosures

Page
82**1/2" Astro****AST-1895 \$360²⁵**
1/2" Drive THOR G2 Impact Wrench

- Max. torque: 1,020 ft-lb (compare to 1,650 lb nut-busting)
- 6,500 RPM • 92/103 dBA
- Floating air motor and twin-hammer assembly put the weight over the user's hand for balance
- 3 power selection settings
- 1/4" NPT adapter included if hi-flow 1/4" fittings are used

Page
85**3/4" Astro****AST-1896 \$373⁹⁵**
3/4" Drive THOR G2 Impact Wrench

- Max. torque: 1,100 ft-lb (compare to 1,700 ft-lb nut-busting)
- 6,500 RPM • 92/103 dBA
- Floating air motor and twin-hammer assembly put the weight over the user's hand for balance
- 3 power selection settings
- 1/4" NPT adapter included if hi-flow 1/4" fittings are used

Page
88**ACA-812-RW \$353⁴⁵**
3/8" Impacting Composite Air Ratchet

- 80 ft-lb
- 350 RPM

Page
125**10-Pc Bolt Extractor Sets**

- Unique snowflake shape hex sockets are used for removing stuck or damaged bolts, nut and screws
- Use with a 3/8" square drive ratchet
- Kits include a punch rod



Item #	Range	
CTA-1232	Metric: 8mm – 19mm	\$122.55
CTA-1234	SAE: 1/4" – 3/4	\$122.55

Page
132**TITAN****1000V Insulated Pliers**

Item #	Description	
Diagonal Cutting Pliers		
TIT-73346	6" Diagonal Pliers, 1000V Insulated	\$29.45
TIT-73347	7" Extended Diagonal Pliers, 1000V Insulated	\$31.85
TIT-73348	8" Extended Diagonal Pliers, 1000V Insulated	\$33.85
Long Nose Pliers		
TIT-73336	6" Long Nose Pliers, 1000V Insulated	\$29.45
TIT-73338	8" Long Nose Pliers, 1000V Insulated	\$33.45
Linesman Pliers		
TIT-73326	6" Combination Linesman's Pliers, 1000V Insulated	\$29.45
TIT-73327	7" Combination Linesman's Pliers, 1000V Insulated	\$31.45
TIT-73328	8" Combination Linesman's Pliers, 1000V Insulated	\$33.85

Page
139**AP Astro**AST-78318 **\$39⁵⁵****18" Extra-Long 3/8" Drive Flex Head Nano Socket Ratchet Wrench**

- Designed to work with and retain stubby Nano style stubby impact sockets such as Astro #78319 for a full working height of just 0.88"
- 100-tooth ratcheting mechanism
- Retains 3/8" drive size stubby Nano style sockets with 17mm outside hex

Page
142**GW GEARWRENCH****6 120XP™ Locking Flex Head Ratchet and 6 Point STUBBY Socket Mechanics Tool Sets**

Sets include:

- Extensions: 3" & 6" • Universal joint

Item #	Piece Count	Drive	Size Range	Ratchet length	
GWR-81390	15-Pc	1/4"	4mm – 14mm	7"	\$112.65
GWR-81391	14-Pc	1/4"	3/16" – 9/16"	7"	\$112.65
GWR-81392	18-Pc	3/8"	6mm – 19mm	13.5"	\$147.25
GWR-81393	16-Pc	3/8"	5/16" – 1"	13.5"	\$147.25



81391

81390

81393

Page
143**GW GEARWRENCH**

81394



81395



81396



81397

6 6 Point Socket Sets

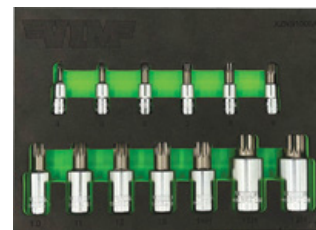
Item #	Drive	Piece Count	Size Range	
STUBBY Length				
GWR-81394	1/4"	12-Piece	4mm – 15mm	\$56.35
GWR-81395	1/4"	10-Piece	3/16" – 9/16"	\$51.95
GWR-81396	3/8"	14-Piece	6mm – 19mm	\$86.65
GWR-81397	3/8"	13-Piece	1/4" – 1"	\$82.25

Page
155CTA-1469 **\$68⁰⁵****11-Pc Flat-Cut External Torx® Socket Set for Low Profile Fasteners**

- 3/8" drive • E5 to E20

Page
159**VIM**VIM-XZNS1000A **\$137⁷⁵****13-Pc XZN Bit Socket Set**

- 2-pc driver with a stubby bit over a standard socket
- 1/4" drive: XZN 4 – 9
- 3/8" drive: XZN 10 – 13, and XZN Tamperproof 14
- 1/2" drive: XZN Tamperproof 16 H & 18H

Page
159**VIM**VIM-XZN100A **\$71⁸⁵****13-Pc 3/8" Drive XZN Stubby Bit Socket Set**

- XZN 4 – 14
- XZN Tamperproof 16H and 18H



Page
167**Slim Jaw
Adjustable Wrenches**

- Rubber handle

Item #	Length	
GRI-87020	6"	\$24.95
GRI-87022	8"	\$34.95
GRI-87024	10"	\$46.45

Page
179**TITAN**TIT-16239 **\$18¹⁵****3-Pc Impact Grade
Slotted Wing Nut Driver Set**

- Designed for use with wing nuts, eye screws, and C hooks
- Sizes: 7/16", 1/2", 15/16"
- Shank: 1/4" Hex
- Overall lengths: 2-9/16" and 2-15/16"
- For use with all types of drills and impact drivers

Page
180**TITAN** **33-Pc Security Bit Set**

- (9) Tamper-resistant star: TR8, TR10, TR15, TR20, TR25, TR27, TR30, TR35, TR40
- (12) Tamper-resistant Hex
Metric: 2, 2.5, 3, 4, 5, 6mm
SAE: 5/64", 3/32", 7/64", 1/8", 9/64", 5/32"
- (4) Spanner: #4, #6, #8, #10
- (4) Tri-wing: #1, #2, #3, #4
- (3) Torq: #6, #8, #10
- (1) 2.5" Magnetic bit holder

Item #	Length	
TIT-16633	2"	\$17.75
TIT-16533	5"	\$41.05

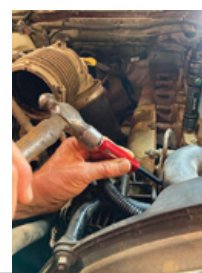
Page
204**LANG****3-Pc 5" Long
Mini Pocket Pry Bars**

- 3/16" diameter steel blade
- Tips: 0°, 27°, 55°

Item #	Description	
LAN-853-06-3ST	Orange	\$40.25
LAN-853-06-3ST-B	Blue	\$40.25
LAN-853-06-3ST-G	Green	\$40.25

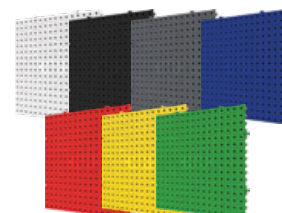
Page
204**Lisle**LIS-35100 **\$11²⁵****5" Long Pocket Size
Pry Bar with Strike Cap**

- 1/4" shaft

Page
218**EZRED**EZR-EZBIT-R **\$34⁴⁵****Flexible Magnetic
Bit Holder,
Holds 48 Bits**Bits not
included.Page
219**TOOLGRID**
ORGANIZATION SYSTEM**TGB-6X6 – 6" x 6" Modular Boards**

- Fully customizable and fun to configure!
- TGB-6X6 boards work with all Toolgrid holders and screws and are compatible with the original Toolgrid boards
- Trim off the right amount, for a perfect fit
- Each colour is sold in packs of 16

Item #	Colour	
TLG-52015	White	\$135.45
TLG-52016	Black	\$135.45
TLG-52017	Grey	\$135.45
TLG-52018	Blue	\$135.45
TLG-52019	Red	\$135.45
TLG-52020	Yellow	\$135.45
TLG-52021	Green	\$135.45



Page
233ESC-10459 **\$449⁰⁵****22 Ton EZ-Wheel Jack Stands (Pair)**

- Easy to wheel and maneuver with included extended handle
- 3 height positions: 13.5"/16.5"/20"

ESC-10456 **\$460⁸⁵****22-Ton Jack Stands (Pair)**

- Adjustable screw top saddle
- 3 height positions: 15.5"/17.5"/20.5"
- Saddle extension: 2"
- Max. height: 22.5"

Page
249MIT-MVA6853 **\$125¹⁵****1.5L Fuel & Fluid Extractor/Primer/Dispenser**

- Comes with adapters for diesel fuel and is compatible with other Mityvac connectors
- **Applications:** diesel fuel, gas, motor oil, brake fluid, transmission fluid, rear differential fluid, coolant

Page
253

JDI-AFT58LP

JDI-AGT40

JDI-DEF40

JDI-AFT58LP

**Low-Profile Carrytanks**

- Fits easily in the back of a pickup truck below the truck bed sides
- Rugged polyethylene construction • 12V transfer pump • 10 GPM
- Automatic dispensing nozzle with removable drip tray
- Integrated forklift pockets
- Integrated recesses for ratchet straps • Protective and lockable cover
- Internal baffle prevents sloshing during transport (JDI-AGT40 only)

Item #	Designation	Capacity	Dimensions	Weight	
JDI-JDI-AFT58LP	Diesel	58 Gal	45" x 31" x 17.7"	56 lbs	
JDI-JDI-AGT40	Gasoline	40 Gal	38" x 23" x 18"	66 lbs	
JDI-JDI-DEF40	DEF	40 Gal	38" x 23" x 18"	66 lbs	

Page
261ASM-2123 **\$204⁰⁵****8-Pc Oil Filter Wrench Socket Set**

- 24mm, 27mm, 32mm, 36mm
- 64mm - 14 Flats
- 65mm - 14 Flats
- 74mm - 14 Flats
- 86.5mm - 16 Flats

Applications:

- The oil filter wrench sockets cover many foreign and domestic applications
- The 24mm covers the 3.6L found in Chrysler/Dodge/Jeep/RAM vehicles
- The 27mm, 32mm, and 36mm hex sizes covers VW/Audi, BMW, newer Mercedes 4-cyl. engines, Saturn & GM 2.2L Ecotec engines
- The 64mm covers Jaguar/Land Rover 2.0L
- The 3 cups style wrenches cover many Audi, BMW, Dodge, Ford, Mazda, Mercedes, Toyota, VW and Volvo (1999-2020) models

Page
263CTA-4324 **\$40⁸⁵****4-Pc Oil Filter Wrench Kit with Magnetic Stand**

- (2) Band-type oil filter wrenches: 64-83mm, 83-95mm
- (1) Strap-type oil filter wrench: 152mm (6") diameter
- (1) Swivel oil filter wrench: adjustable from 76-102mm (3" - 4-1/32")

Page
285**Solo CLEANLine Sprayers**

- Designed for cleaning and disinfection
- Durable, translucent, high-density polyethylene tanks are resistant against chemicals and UV rays
- Corrosion-resistant

303-FA
303-FB

Viton® Seals

EPDM Seals

Item #	Description	Cap.	Nozzle/Accessories	
SLO-303-FA	Pressure Sprayer with FOAMING FUNCTION	1.25 L	• Flat spray nozzle • "varioFOAM" function	\$54.25
SLO-303-FB	Pressure Sprayer with FOAMING FUNCTION	1.25 L	• Flat spray nozzle • "varioFOAM" function	\$54.25

Page
325

GRI-98356 **\$69⁹⁵**
3-Pc Welding "F" Clamps
 • 6" x 3"
 • 8" x 3"
 • 12" x 3"

Page
326

GRI-98122 **\$109⁹⁵**
Eagle Auto-Darkening SolarWelding Helmet
 • Variable shades from DIN 9 to 13
 • 3.86" x 2.17" viewing area
 • Filters protect against UV & IR

Page
327

**Toughseries™
Lighted
Tape Measures**
 • Built-in LED light
 • Double-sided print for
vertical & overhead
measurements
 • Straighter, stronger
17-ft. max. reach
 • Up to 3 hours runtime
 • Auto-shutoff
 • Includes a USB
charging cable



Item #	Scale	Blade L x W	
DEW-DWHT35625S	SAE	25 ft. x 1-1/4"	\$48.65
DEW-DWHT35626S	SAE/Metric	26 ft. / 8m x 1-1/4"	\$48.65

Page
336

LIS-39770 **\$41⁷⁵**
Brake Spring Fork
 • Easily removes and replaces the S-Cam return spring

Page
341

ATD-8750 **\$122¹⁵**
Digital Tire Inflator Gauge
 • Scale: 0-255 psi / 0-1,800 kPa / 0-18 kg/cm² / 0-18 Bar
 • Inflates/deflates
 • Auto-on when pressure detected and
auto-off after 15 seconds
 • Rubber boot protects gauge against impact
 • Gauge swivels 360° for easy reading
 • Uses (2) AAA batteries (included)
 • 23-1/2" hose with lock on air chuck

Page
345

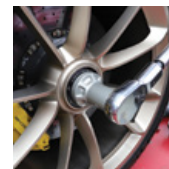
GWR-89650 **\$124⁹⁵**
**5-Pc 1/2" Drive 8" Long Torque
Limiting Impact Extension Set**
 • 65 ft-lb (90 Nm)
 • 80 ft-lb (110 Nm)
 • 100 ft-lb (135 Nm)
 • 120 ft-lb (160 Nm)
 • 140 ft-lb (190 Nm)
 • Includes blow molded case

Page
348

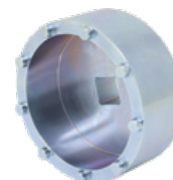
LIS-51330 **\$61⁷⁵**
**Adjustable Chrome Lug Nut
Cap Remover**

Page
348

CTA-5016 **\$345⁹⁵**
Porsche 911 Center Lock Nut Remover/Installer Socket
 • Works on Carrera 997 and 991 models
 • Max. torque: 500 ft-lb (use a torque wrench or torque multiplier
for proper use)
 • Comparable to Factory Tool #99136106900

Page
358

CTA-5900 **\$108⁹⁵**
GM Hub Nut Remover/Installer Tool
 • Removes and installs the hub nut on
GM 11.5" & 12.0" rear axles
 • Services new hub nut used on 2020+ Chevrolet Silverado
& GMC Sierra 2500/3500 HD trucks 11.5" & 12.0" axles
with Dual Rear Wheel hubs
 • Compare to GM Factory Tool DT-52754



Page
364

ASM-FZ52LHT **\$121⁴⁵** Coolant Pressure Adapter for GM Trucks

- Applicable to 2017 and newer Duramax engines with M52 x 2.5 left hand threaded coolant reservoirs

Page
380

ASM-BY10 **\$52⁴⁵** 3/8" Drive 12 Pt. Bypass Wrench for Heavy-Duty Trucks

- Used to assist in removal and re-installation of Turbo nuts and bolts

Page
382

LIS-10810 **\$129⁶⁵** 5-Pc Injector Rail Fuel Line Cap Set

- Used to block off the fuel rail during fuel pressure diagnostics in 2003-2022 Cummins, 2001-2022 Duramax, and 2008-2022 Ford engines

Page
383

CTA-7798 **\$177⁰⁵** Ford Fuel Injector Puller

- Services: Ford EcoBoost GDI engines (1.0L, 2.0L & 3.5L)
- Commonly used for replacing Injector #CM5G-9F593-FA
- Comparable to Ford factory tool #310-206

Page
392

MTC-91787 **\$1,199⁰⁰** Mobile Monster - 110V Complete Heavy Duty Charging/Recovery Station

- 4-way aluminum manifold (1/4" SAE fittings) with digital gauges for precise calculations of over 90 refrigerants
- 240 lb capacity electronic charging scale
- 6 CFM, 2 stage vacuum pump
- Twin Turbo refrigerant recovery machine with oil separation module, filter dryer and sight glass
- Hoses: 200" blue and red, 72" & 36" yellow, 36" black
- 10" extra large tires
- Dimensions: 36-1/4" x 28-3/4" x 25"

Page
402

LIS-38410 **\$50⁴⁵** 6-Pc DEF & Fuel Line Disconnect Set

- Low profile compact design allows easy access to DEF, breather line, coolant line, and fuel line connectors found on most cars, truck and heavy-duty vehicles
- 1/4" drive allows use with a breaker bar or extension
- 4 sizes to compress and 2 sizes to spread connectors to remove the line: 1-3/8" (34.4mm), 1" (25.4mm), 7/8" (22.6mm), ID .918, ID .623 (OD 1.115), ID .512 (OD .810)

Page
403

TIT-51527 **\$35⁴⁵** 9" Tube Bending Pliers

- For use in bending, aligning or adjusting brake, fuel and other small tubing in confined areas without kinking lines
- Fits 3/16" and 1/4" diameter tubing



NEW PRODUCTS NOW AVAILABLE

Page
6

\$248

REDLITHIUM™ USB Jobsite Earbuds (2191-21)



\$709

M18 FUEL™ 1/2" High Torque Impact wrench w/ Friction Ring Kit (2967-22)



\$389

M18 FUEL™ 1/2" High Torque Impact wrench w/ Friction Ring (Tool Only) (2967-20)



\$538

M12 FUEL™ INSIDER™ Extended Reach Box Ratchet Kit (3050-21)

\$599

M-Spector™ 360 5' Inspection Camera (Tool Only) (3150-20)



\$1,018

M18 FUEL™ HTIW 1/2" / MTIW 3/8" Auto 2PC Kit (3010-22)



\$398

M12 FUEL™ INSIDER™ Extended Reach Box Ratchet (Tool Only) (3050-20)

\$298

M18™ 70,000 BTU Forced Air Propane Heater (0801-20C)



\$1,199

M18 FUEL™ 5 CFM Vacuum Pump Kit (2941-21)



\$69

8PC INSIDER™ Box Ratchet Socket SAE Set (49-16-1640)



BEST TAP & DIE SOLUTION ON THE MARKET

\$240

38PC Metric Tap & Die PACKOUT™ Set w/ Hex-LOK™ 2-in-1 Handle (49-22-5603)



\$240

38PC SAE Tap & Die PACKOUT™ Set w/ Hex-LOK™ 2-in-1 Handle (49-22-5604)



\$85

15PC SAE Tap and Die Set w/ Hex-LOK™ 2-in-1 Handle (49-22-5602)



\$51

Hex-LOK™ 2-in-1 Tap and Die Threading Handle & Tap Collet (49-57-5003)



\$52

17PC SAE Tap and Die Set (49-22-5600)



\$52

17PC Metric Tap and Die Set (49-22-5601)



\$30

Hex-LOK™ 2-in-1 Tap and Die Threading Handle (49-57-5002)



\$28

Tap Collet for Taps up to 1/2" & T Handle Bar (49-57-5001)



NEW**IN THIS CATALOGUE**

October – December 2023

Page
2

AUTEL MAXISYS

BRING YOUR BAY

TO THE MAX

ADAS BAY MAX LIFT

Designed specially for ADAS calibration, while providing safer and more efficient mechanical repair and wheel alignment in a single standard bay space.

**NEW
ADAS LIFT**

AULAULS14ALOR1T

**ALL SYSTEMS
ADAS CALIBRATION****MECHANICAL
REPAIR****WHEEL
ALIGNMENT**

TURN A SINGLE BAY INTO A MAXIMIZED PROFIT CENTER



PREMIUM LIFT FEATURES

The innovative table riser, rolling jacking beams, stainless steel radius plates, runway air inflation, and LED undercarriage lighting are all standard.

DRIVE ON/OFF AND IN ANY DIRECTION

Front and rear open runways paired with the unique flush-mount H shape configuration increases floor space, allowing for all systems ADAS calibration.

AULIA900 + AULMSULTRA

A single system complete diagnostics, alignment, and ADAS workflow. One Maximized Bay.



AUTEL ACADEMY TECHNICAL TRAINING

Visit autel.com/us/academy and register today for hands on automotive diagnostic, repair, service, and ADAS instruction.

AUTEL®

AUTEL.COM | FOLLOW US @AUTELTOOLS

NEW**IN THIS CATALOGUE**

October – December 2023

Page
411**AUTEL MAXIFLASH**

XLINK 3-IN-1

COMMUNICATIONS & PROGRAMMING DEVICE

DUAL CHANNELS FOR DATA TRANSFER EFFICIENCY

- Server & Point-to-Point Dual Channel Communication
- Hard-Wired & Wi-Fi Network Communication Modes
- Update Software via Internet Connection



Technicians post orders to the Remote Expert platform via the Autel MaxiFix mobile app

**AUTEL
REMOTE
EXPERT**

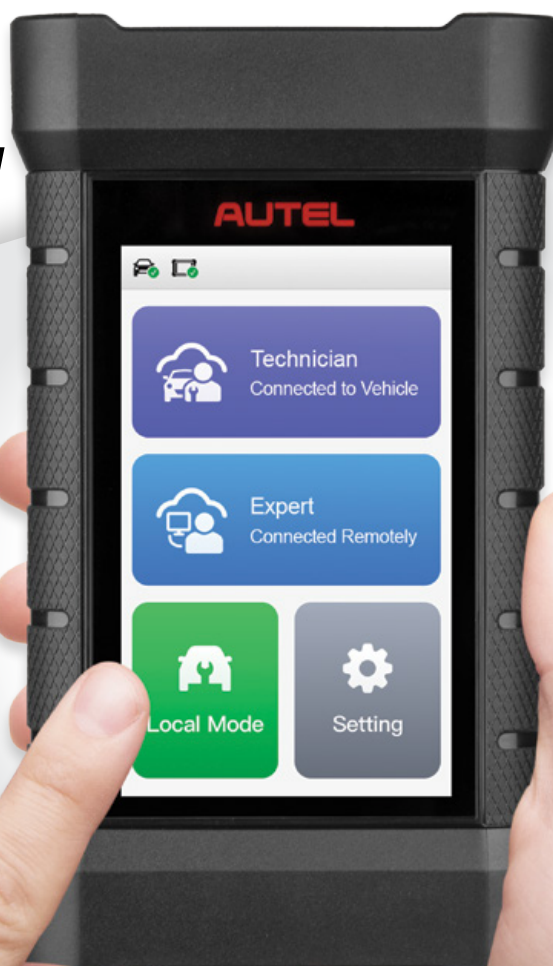
REMOTE PROGRAMMING READY DEVICE

Connect with module programmers, automotive diagnosticians, and system experts for tasks requiring OE data, software, or tools.

J2534 PASS-THRU PROGRAMMER

MULTI-PROTOCOL ENHANCED VCI

Including CAN,
CAN FD & DoIP



AUTEL ACADEMY TECHNICAL TRAINING

Visit autel.com/us/academy and register today for hands on automotive diagnostic, repair, service, and ADAS instruction.

AUTEL®

AUTEL.COM | FOLLOW US @AUTELTOOLS



- Washer & dryer safe
- Heated chest and back
- Adjustable waist to improve fit and comfort
- AXIS™ Ripstop polyester
- Abrasion, water & wind resistant
- M12™ REDLITHIUM™ CP2.0 battery: 8 hrs Low, 4 hrs Medium, 2 hrs High

M12™ Heated AXIS™ Sleeveless Vests



Includes M12™ Battery Holder, Battery, Charger

-21 Series

\$258.00 \$258.00

Size	MEN	WOMEN
S	MLW-305B-21S	MLW-334B-21S
M	MLW-305B-21M	MLW-334B-21M
L	MLW-305B-21L	MLW-334B-21L
XL	MLW-305B-21XL	MLW-334B-21XL
2XL	MLW-305B-212X	MLW-334B-212X

M12™ Heated TOUGHSHELL™ Jackets



- Washer & dryer safe
- Heated chest, back, and pocket zones
- TOUGHSHELL™ stretch polyester
- Better stretch, mobility, flexibility
- Abrasion, water & wind resistant
- M12™ REDLITHIUM™ CP3.0 battery: 12 hrs Low, 6 hrs Medium, 3 hrs High



Includes M12™ Compact Charger & Power Source, Battery, Charging Cable & Plug

\$278.05

-21 Series

BLACK

S	MLW-204B-21S
M	MLW-204B-21M
L	MLW-204B-21L
XL	MLW-204B-21XL

NAVY

S	MLW-204BL-21S
M	MLW-204BL-21M
L	MLW-204BL-21L
XL	MLW-204BL-21XL



Women's Black

M12™ WOMEN'S HEATED AXIS™ JACKET



Includes M12™ Compact Charger & Power Source, Battery, Charging Cable

\$278.05

-21 Series

S	MLW-234B-21S
M	MLW-234B-21M
L	MLW-234B-21L

- Washer & dryer safe
- AXIS™ Ripstop polyester
- Reinforced high-wear zones
- Abrasion, water & wind resistant
- Adjustable waist to improve fit and comfort
- M12™ REDLITHIUM™ CP3.0 battery: 12 hrs Low, 6 hrs Medium, 3 hrs High

HEATED GEAR



M12™ HEATED AXIS™ HOODED JACKET

- M12™ REDLITHIUM™ CP3.0 battery: 12 hrs Low, 6 hrs Medium, 3 hrs High



Black

- Washer & dryer safe
- Fitted hood designed to be worn comfortably under a hard hat without restricting vision
- Abrasion, water & wind resistant
- Adjustable waist



Includes M12™ Compact Charger & Power Source, Battery, Charging Cable

\$298.05

Size	-21 Series
S	MLW-205B-21S
M	MLW-205B-21M
L	MLW-205B-21L
XL	MLW-205B-21XL

M12™ Heated QUIETSHELL™ Jacket



Camo

- M12™ REDLITHIUM™ CP3.0 battery: 12 hrs Low, 6 hrs Medium, 3 hrs High



Includes M12™ Compact Charger & Power Source Only

\$328.05

Size	-21 Series
M	MLW-224C-21M
L	MLW-224C-21L
XL	MLW-224C-21XL

- Washer & dryer safe
- QUIETSHELL™ stretch polyester
- Reinforced high-wear zones
- Water & wind resistant



Black

Gray

M12™ HEATED HOODIES



Includes M12™ Battery Holder Only

\$178.05

Includes M12™ Battery Holder, Battery, Charger

\$218.05

-20 Series	-21 Series
	BLACK

S		MLW-306B-21S
M		MLW-306B-21M
L	MLW-306B-20L	MLW-306B-21L
XL	MLW-306B-20XL	MLW-306B-21XL

GRAY

S		MLW-306G-21S
M		MLW-306G-21M
L	MLW-306G-20L	MLW-306G-21L
XL	MLW-306G-20XL	MLW-306G-21XL

- Washer & dryer safe
- Fleece and warm jersey lining
- Fitted hood designed to be worn comfortably under a hard hat without restricting vision
- Durable utility pockets with reinforced edges
- 53% Cotton / 47% Polyester
- M12™ REDLITHIUM™ CP2.0 battery: 8 hrs Low, 4 hrs Medium, 2 hrs High

Page
24**GEARWRENCH**GWR-2173DD **\$14⁷⁵****Three-Way Battery Tool**

- Sharp steel blades remove corrosion and put a correct angle on terminal clamps and posts
- Use the 6-Blade, tapered reamer to quickly clean terminal clamps
- Post cleaners are marked positive and negative, and are sized to accurately fit terminal posts and cut the correct angle

Page
36**BAYCO
NIGHTSTICK****6" Rechargeable
Dual-Light™
Tactical Flashlight**

- Flashlight: 900/350/150 lumens, 3/6/22 hrs
- Floodlight: 250 lumens, 3.5 hrs
- Dual-light: 500 lumens, 2.5 hrs
- Strobe mode
- Waterproof and impact resistant
- Includes a holster

Item #	Body	
BAY-USB-578XL-BL	Blue & Black	\$187.25
BAY-USB-578XL-G	Green & Black	\$187.25
BAY-USB-578XL-R	Red & Black	\$187.25

Page
126**IRWIN.
HANSON.**IRW-21101 **\$33⁵⁵****T-Handle Ratcheting Tap Wrench,
Standard Length**

- Designed for use with taps, reamers, screw extractors and other tools with a square shank
- No. 0 to 1/4" (3mm to 6mm)

Page
189**CRESCENT
Wiss**WIS-WC5LN **\$45³⁵****10" Long 5-Blade HVAC Hand Crimper**

- Compound action jaw

**9" Long Hand Seamers**

- Used for bending and flattening sheet metal
- 1/4" depth markings from 1/4" to 1-1/4"
- Produces a permanent, tight-fitting seam



Item #	Jaw Width	Handle	
WIS-WS3N	3"	Straight	\$70.85
WIS-WS6N	6"	Straight	\$90.35
WIS-WS4N	3"	Offset	\$75.75

Page
189**CRESCENT
Wiss**WIS-CTFDUCTC **\$51⁷⁵****17.5" Long Compound Action Flex Duct Cutter**

- Dual-cut technology provides a serrated and smooth cutting surface
- Cutter integrated into the base for easy cutting of the hard still wire within the flex duct

Page
189**CRESCENT
Wiss**WIS-M123R **\$90²⁵****3-Pc Metalmaster® Compound Action Aviation Snips**

- Includes M1R, M2R, M3R
- 9-3/4" long
- Cuts up to 18 gauge low carbon, rolled steel



Page
193**KLEIN
TOOLS**KLE-D2000-9NE **\$83⁸⁵****9" High-Leverage Heavy-Duty Cutting Lineman's Pliers**

- Application: ACSR, screws, nails, most hardened wire
- Jaw capacity: 1.375" (3.5 cm)
- The 2000 series blades are designed for heavy-duty cutting

Page
193**KLEIN
TOOLS**KLE-J213-9NE **\$81⁹⁵****9.5" Journeyman™ Lineman's Side-Cutting Pliers**

- Application: General purpose
- Jaw capacity: 1.375" (3.5 cm)
- Dual-material, comfort grip handles

Page
245**Milwaukee**MLW-2579-20 **\$249⁰⁵**
**M12™ Stick Transfer Pump
(Bare Tool)**

- 9 GPM
- 360° filter maximizes flow in heavy debris and shields against clogs
- 3/4" outlet attaches to standard garden hose
- 36" submersible barre

Page
267**LINCOLN**

LIN-989

**Air-Operated
Double Acting
Heavy Duty
Grease Pump**

- Ratio: 50:1
- Works with 25-50 lb containers (not included)
- Max. pressure: 7,500 psi
- Output: 80 cubic in./min.
- 7 ft. grease hose, control valve, straight and universal swivels, drum cover, flexible follower plate

Page
274**BE**

P1715EN

P2115EN

**Electric Pressure Washers
– Cold Water**

- Automatic Start/Stop System

Item #	BEP-P1715EN	BEP-P2115EN
Series	Workshop	Workshop
PSI	1,700 psi	2,150 psi
Motor	1.2 HP, 120V	1.5 HP, 120V
Max. Flow	1.7 GPM	1.6 GPM
Hose	20 ft.	25 ft.
Accessories	Spray Wand, 15° High Pressure Nozzle, Soap Foam Cannon	Spray Wand, 15°, 25° High Pressure Nozzles, Rotary Turbo Nozzle, Soap Foam Cannon
Weight	20 lbs	35 lbs
	\$188.85	\$295.65

Page
278ENR-F340662 **\$338⁴⁵****Cordless Forced Air Propane Heater**

- 27,000/68,000 BTU per hour
- 300 CFM
- Heats up to 1,700 sq. ft.
- Runs 7 to 13 hrs on a 20 lb propane tank
- High temperature limit switch
- Quiet burner technology
- Hose and regulator included
- Powered by the 20V MAX® & FLEXVOLT® family of DEWALT® batteries, sold separately
- 19.75" x 12" x 18"
- Propane tank not included

Page
278ENR-F340640 **\$503⁴⁵****240V Forced Air Electric Heater**

- 11,260 BTU per hour
- 230 CFM
- 3,300 Watts
- Heats up to 275 sq. ft.
- Equipped with a 25°F-95°F thermostat
- Minimum breaker required: 2 pole, 15A
- Single phase
- Thermostatically controlled
- Cord/plug not included
- 13.62" x 15.75" x 17.12"

Page
278ENR-F170125 **\$425⁹⁵****Forced Air Propane Industrial Heaters**

- 75,000 – 125,000 BTU/hr
- 350 CFM
- Heats up to 3,000 sq. ft.
- Runs up to 11 hrs on a 40 lb propane tank
- Rugged and durable steel construction
- Economical, efficient and clean burning
- Heavy duty high output fan
- 20 ft. hose and regulator included
- Electrical rating: 115V, 3A
- #F170035 dim.: 20.75" x 9.75" x 12.75"
- #F170125 dim.: 21.25" x 11.75" x 15.75"
- Propane tank not included

ENR-F170275 **\$504¹⁵****Forced Air Kerosene Industrial Heater**

- 75,000 BTU per hour
- 240 CFM
- Heats up to 1,750 sq. ft.
- Runs up to 11 hrs
- Use with kerosene #1 & #2, diesel #1 & #2, home heating oil, and JP-8
- 6-gal/23L fuel tank capacity
- Enclosed motor
- Overheat safety shutdown
- Built-in thermostat • Fuel gauge
- Electrical rating: 115V, 10A
- 32.25" x 14.25" x 17"

Page
278ENR-F232050 **\$169⁰⁵****Portable Buddy Radiant Propane Heater**

- 2 heat settings - 4,000/9,000 BTU per hour
- Heats up to 225 sq. ft.
- Runs 2.4 to 5.4 hours on a 1 lb disposable propane cylinder
- Runs 48 to 108 hours on a 20 lb propane tank with optional hose and filter
- One button Piezo ignition on function
- Accidental tip-over safety shut-off
- Automatic low oxygen shut-off system
- Swivel regulator
- Fold down handle
- 14.25" x 9" x 15"
- Propane cylinder or tank not included

Page
278ENR-F332100 **\$339⁶⁵****Cordless Radiant Propane Heater**

- 6,000/12,000 BTU per hour
- Rugged handle with LED light bar
- High speed fan
- Dual 1 lb tank capacity for a 7-hr run time
- 3 USB charging ports
- Tip-over safety switch
- Oxygen Depletion System
- Powered by the 20V MAX® & FLEXVOLT® family of DEWALT® batteries, sold separately
- 15.75" x 10.5" x 14"
- Propane tank not included

Page
278Page
278ENR-F242100 **\$83³⁵****Liquid Propane Tank Top Radiant Heater**

- 10,000/12,000/15,000 BTU per hour
- Runs up to 28 hours on a 20 lb propane tank, not included
- No tool needed, hand wheel installation
- Tip-over safety shut-off
- CSA certified
- Propane tank not included

